

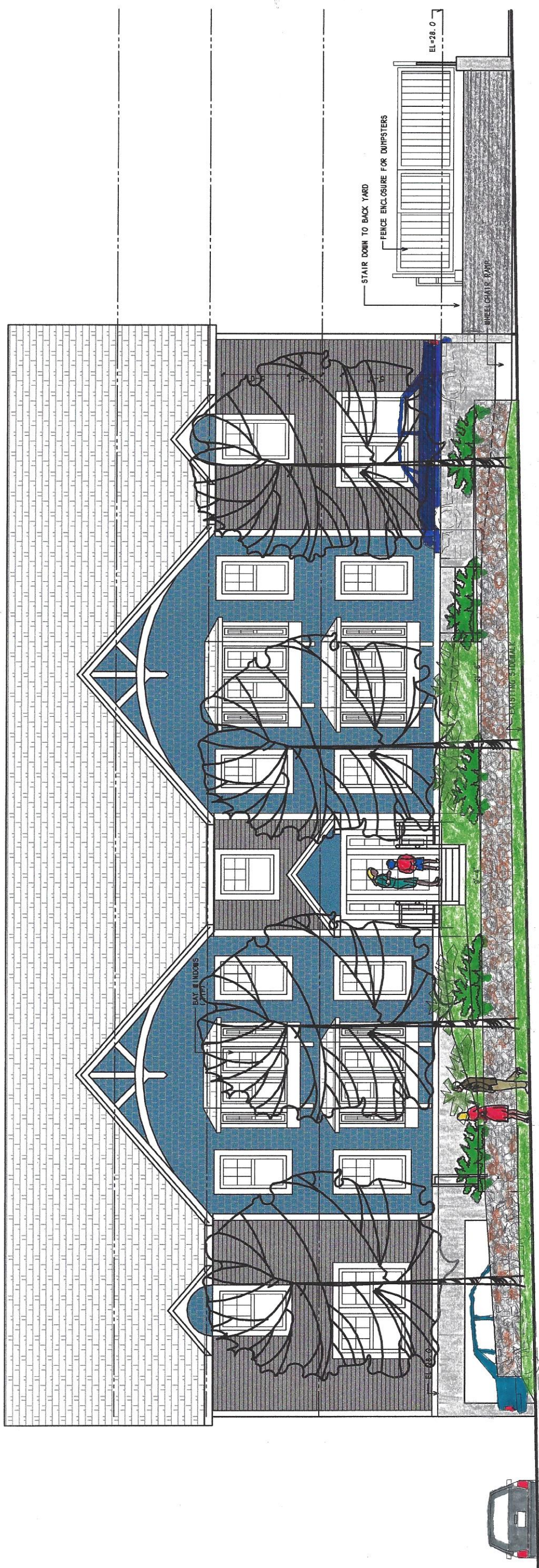
TOTAL UNITS = 10      TOTAL REQ. PARKING = 16 SPACES

8-ONE BR x 1.5/UNIT = 12 SPACES; 2-TWO BR x 2.0/UNIT = 4 SPACES

PARKING SPACES PROVIDED = 16 SPACES (8 INSIDE + 8 OUTSIDE)

TOTAL GROSS RESIDENTIAL SF = 7270 SF

OCCUPANCY@ 200 GSF/OCC = 37 OCCUPANTS



HIGH STREET ELEVATION