



Ipswich “Big Bad Bug” Hunt



Asian Longhorn Beetle
Emerald Ash Borer





What can you do to stop these harmful pests?

- Look for Asian Longhorn Beetles (ALB) in many hardwood trees (e.g., Ash, Birch, Elm, Maple, Horsechestnut, Poplar, Willow) and Emerald Ash Borers (EAB) in ash trees.
- When you clean your pool, look for EAB and ALB in your filter and skimmers.
- DO NOT MOVE FIREWOOD. Go to <http://www.dontmovefirewood.org/> for more information.
- If you think you found one, take a photo and call MA Dept. of Ag. Resources: 866-702-9938.

Insects in Minnesota That May Be Confused With Emerald Ash Borer

Jeff Hahn, University of Minnesota Extension
Val Cervenka, Minnesota Department of Natural Resources

PRODUCED BY
UNIVERSITY OF MINNESOTA
EXTENSION



extension.umn.edu

dnr.state.mn.us

WITH SUPPORT FROM
MINNESOTA DEPARTMENT OF AGRICULTURE

mda.state.mn.us



emerald ash borer



bronze birch borer



twolined chestnut borer



blow fly



polydrusus weevil



halictid bee

flatheaded apple tree borer



Buprestis metallic
Woodboring beetle



blister beetle



Japanese beetle



dogbane beetle



annual cicada



green stink bug



Chlaenius
ground beetle



bark gnawing beetle



Poecilus
ground beetle



sixspotted tiger beetle

ASIAN LONGHORNED BEETLE LOOK-ALIKES

(all insects shown approximately to scale, sizes given do not include antennae)

Asian longhorned beetle

(*Anoplophora glabripennis*)

$\frac{3}{4}$ – 1 $\frac{1}{2}$ inch long

Shiny black, bright white spots

Long antennae, banded

black and white

Black scutellum



Whitespotted sawyer

(*Monochamus scutellatus*)

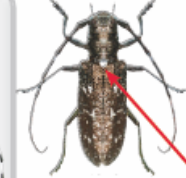
$\frac{3}{4}$ – 1 inch long

Dull or bronzy-black, may be

mottled with whitish patches

Long faintly banded antennae

White scutellum



Northeastern sawyer

(*Monochamus notatus*)

$\frac{3}{4}$ – 1 $\frac{1}{4}$ inch long

Mottled light brown/white,

no distinct spots



Eyed click beetle

(*Alaus oculatus*)

1 - 1 $\frac{3}{4}$ inch long

Black with white speckles;

Black "eye spots"



Brown prionid

(*Orthosoma brunneum*)

1 – 1 $\frac{1}{2}$ inch long

Light chestnut brown, no spots



Broadnecked root borer

(*Prionus laticollis*)

1 – 1 $\frac{1}{2}$ inch long

Black with no white markings

Solid black antennae



Longhorned Beetle

(*Graphisurus fasciatus*)

$\frac{1}{2}$ – $\frac{3}{4}$ inch long

Dark with gray/light brown mottling

Antennae banded white and black



Western conifer seed bug

(*Leptoglossus occidentalis*)

About $\frac{3}{4}$ inch long

Various shades of brown with a

distinct geometric pattern on wings

Last segment of back legs flared out



For more information about the Asian longhorned beetle, or to report a sighting, visit mass.gov/agr/alb.htm or call toll-free 1-866-702-9938



Flyer adapted from a design by the Maine Department of Agriculture

PHOTOS: Asian longhorned beetle: Pennsylvania Dept. of Conservation and Natural Resources - Forestry Archive, Bugwood.org. Whitespotted sawyer, Northeastern sawyer, Broadnecked root borer: Michael Bohne, USDA Forest Service. Eyed click beetle: Tom Murray, bugguide.net. Brown prionid: Kristin Riolo, Priceless Memories, Bugwood.org. Graphisurus fasciatus: Jennifer Forman Orth, Massachusetts Dept. of Agricultural Resources. Western conifer seed bug: Giancarlo Dessi, Wikimedia Commons